

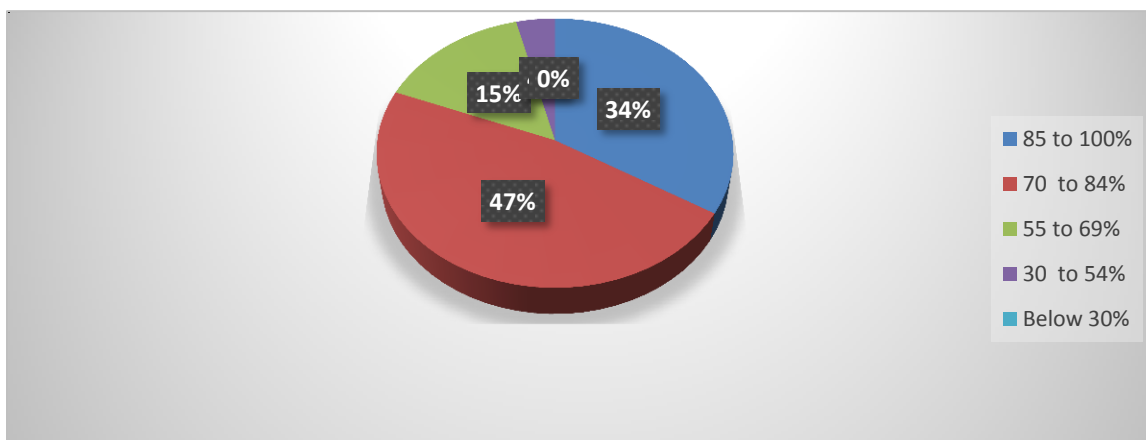
STUDENT SATISFACTION SURVEY REPORT 2020-21

Analysis and the findings:

The responses collected from students through college portal. The responses were analyzed by a team of teachers. The question-wise outcome of the results is presented below:

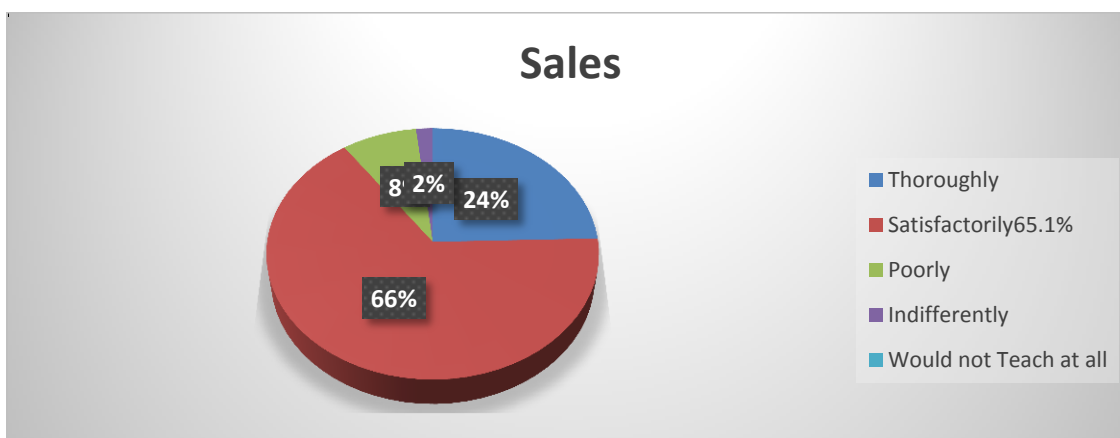
1 How much of the syllabus was covered in the class?

85 to 100%	: (33.43 %)
70 to 84%	: (46.92%)
55 to 69%	: (14.96 %)
30 to 54%	: (3.81 %)
Below 30%	: (0 %)



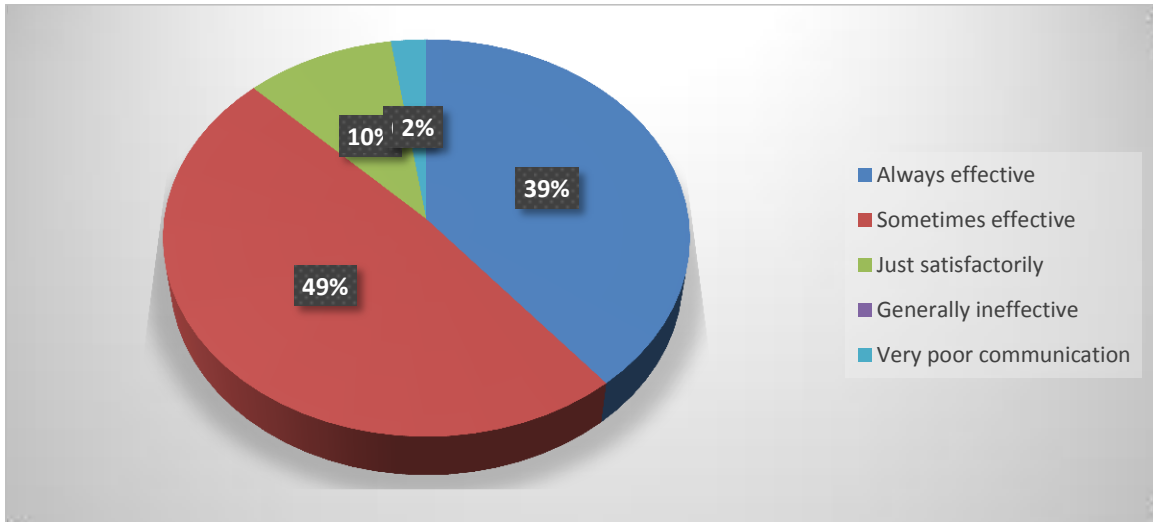
2) How well did the teachers prepare for the classes?

Thoroughly	: (24.34 %)
Satisfactorily	: (65.1 %)
Poorly	: (7.92 %)
Indifferently	: (1.76 %)
Would not teach at all	: (0 %)



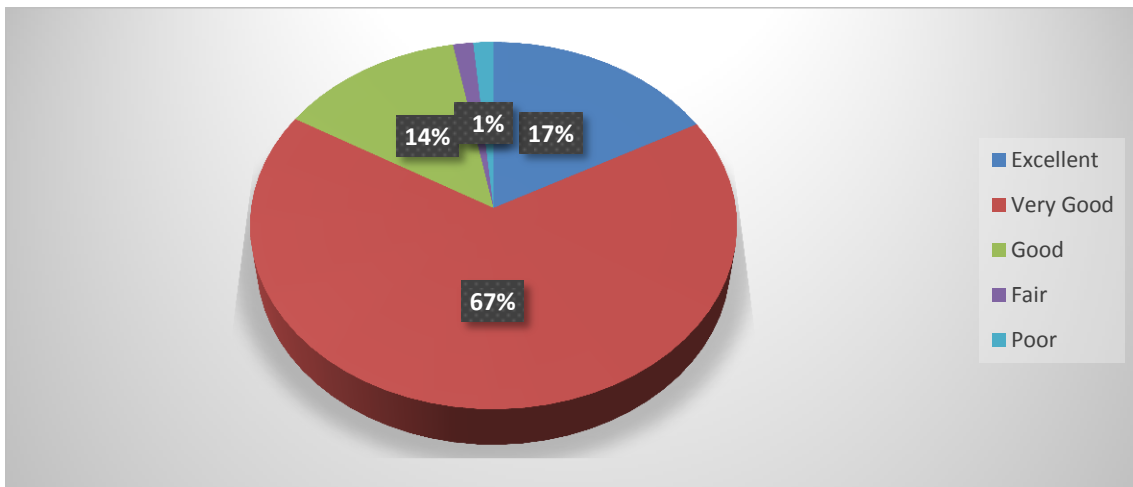
3) How well were the teachers able to communicate?

Always effective : (38.71 %)
Sometimes effective : (48.09 %)
Just satisfactorily : (9.97 %)
Generally ineffective : (0.88 %)
Very poor communication: (2.35%)



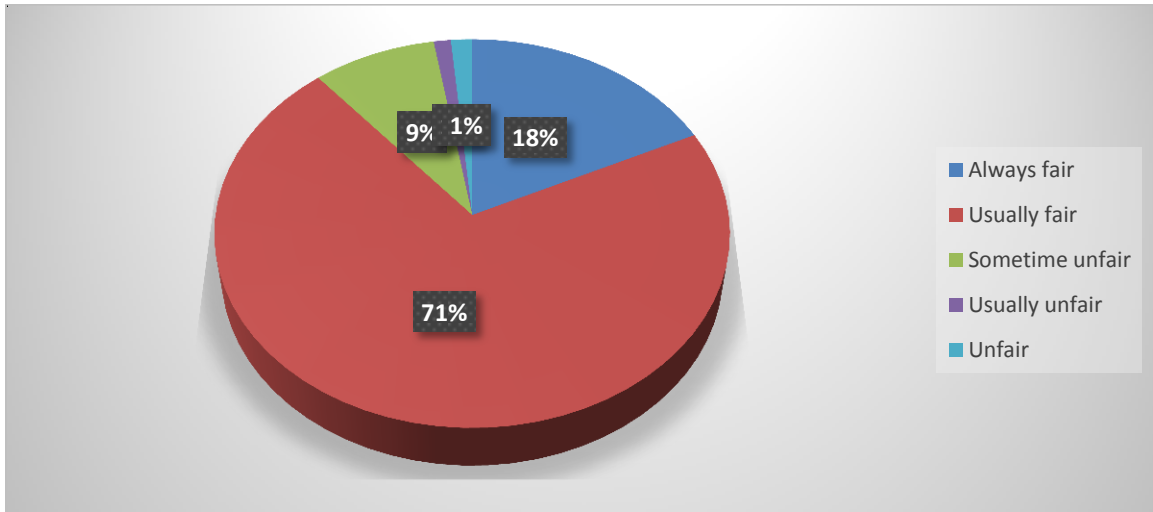
4) The teacher's approach to teaching can best be described as

Excellent : (17.01 %)
Very Good : (66.57%)
Good : (13.49 %)
Fair : (1.47 %)
Poor : (1.47 %)



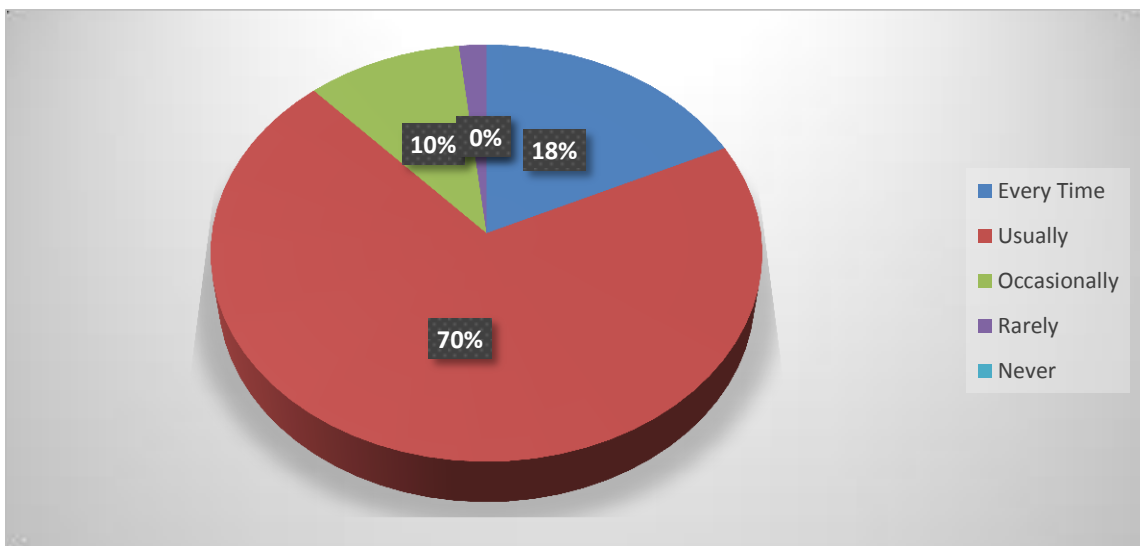
5) Fairness of the internal evaluation process by the teachers

Always fair	: (17.89 %)
Usually fair	: (70.97 %)
Sometime unfair	: (8.5 %)
Usually unfair	: (1.17 %)
Unfair	: (1.47 %)



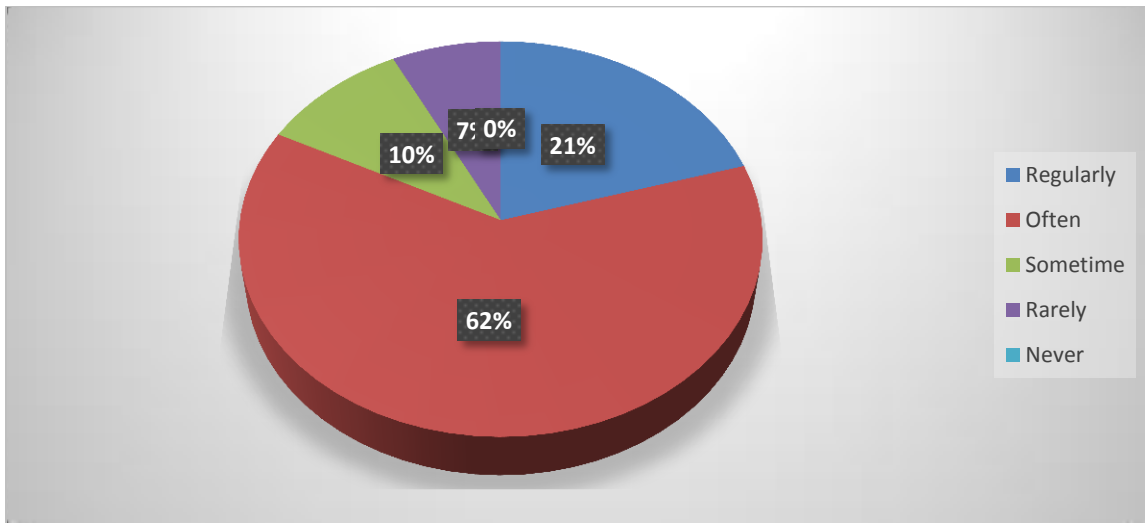
6) Was your performance in assignments discussed with you?

Every Time	: (17.89 %)
Usually	: (70.09 %)
Occasionally/ Sometime	: (9.97%)
Rarely	: (1.76%)
Never	: (0 %)



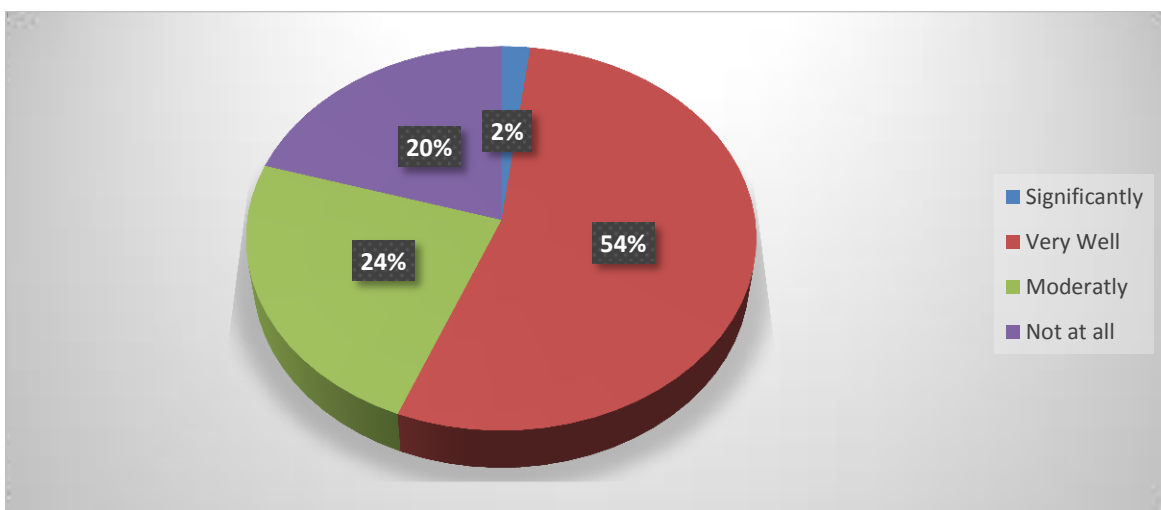
7) The institute takes active interest in promoting internship, student exchange, field visit opportunities for students.

Regularly	: (20.23 %)
Often	: (61.58 %)
Sometime	: (9.97 %)
Rarely	: (7.33%)
Never	: (0 %)



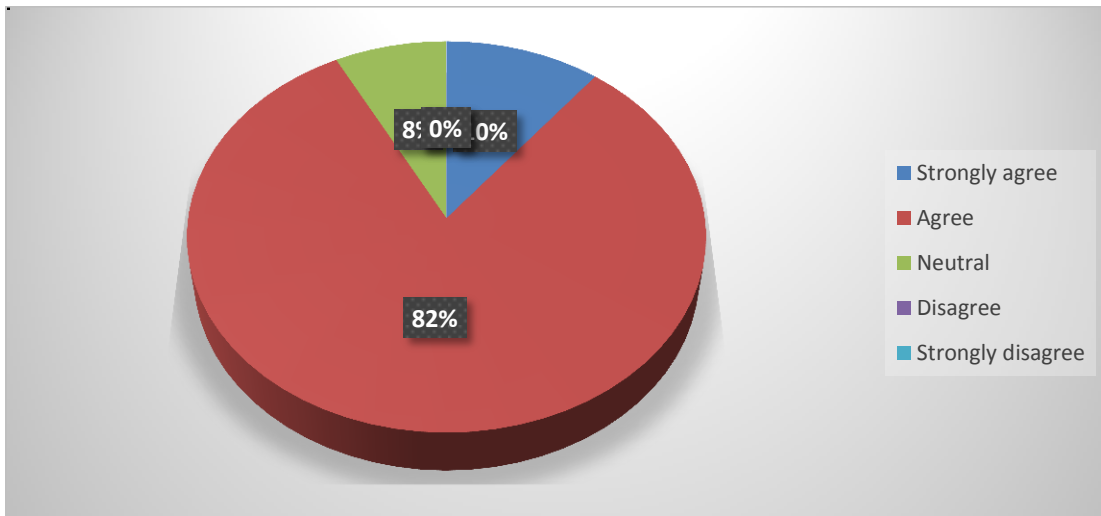
8) The teaching and mentoring process in your institution facilitates you in cognitive, social and emotional growth

Significantly	: (11.73 %)
Very Well	: (75.37 %)
Moderately	: (7.92 %)
Marginally	: (3.52%)
Not at all	: (1.47%)



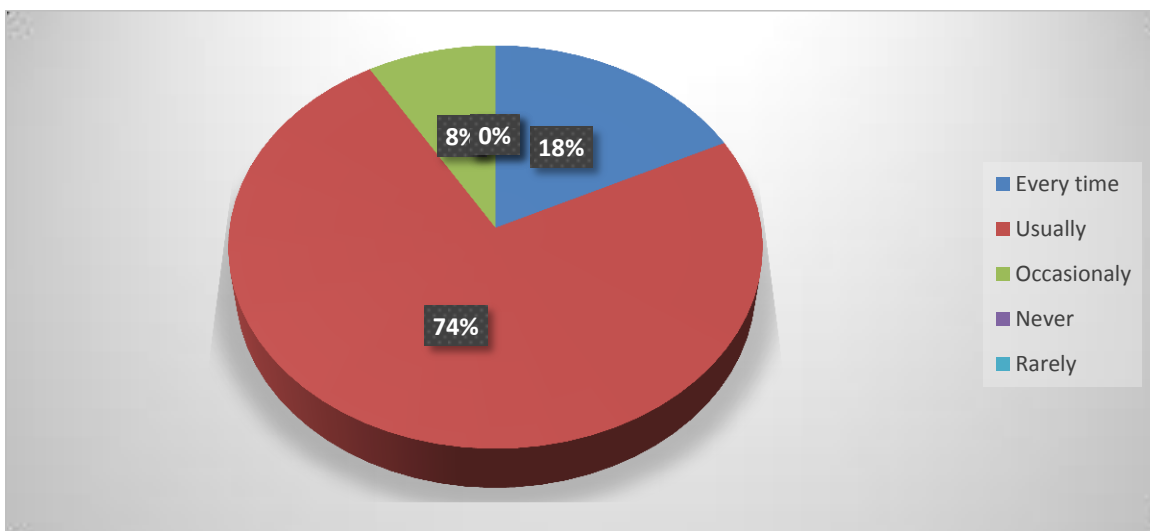
9) The institution provides multiple opportunities to learn and grow.

Strongly agree	: (10.56 %)
Agree	: (81.23%)
Neutral	: (7.62%)
Disagree	: (0%)
Strongly Disagree	: (0 %)



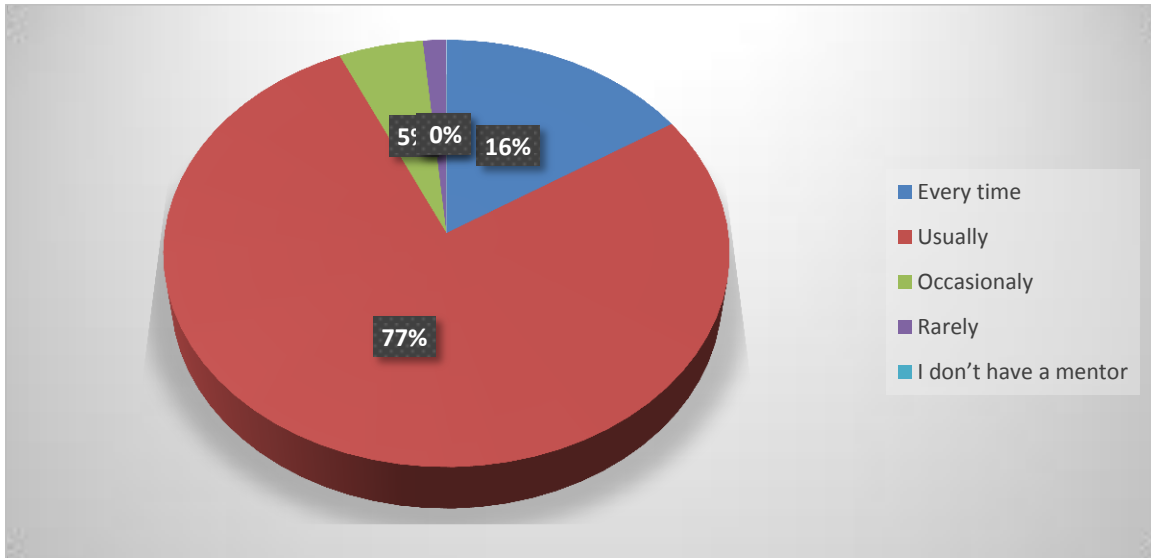
10) Teachers inform you about your expected competencies, course outcomes and programme outcomes.

Every time	: (17.6 %)
Usually	: (73.31%)
Occasionally /Sometime	: (8.5 %)
Rarely	: (0 %)
Never	: (0 %)



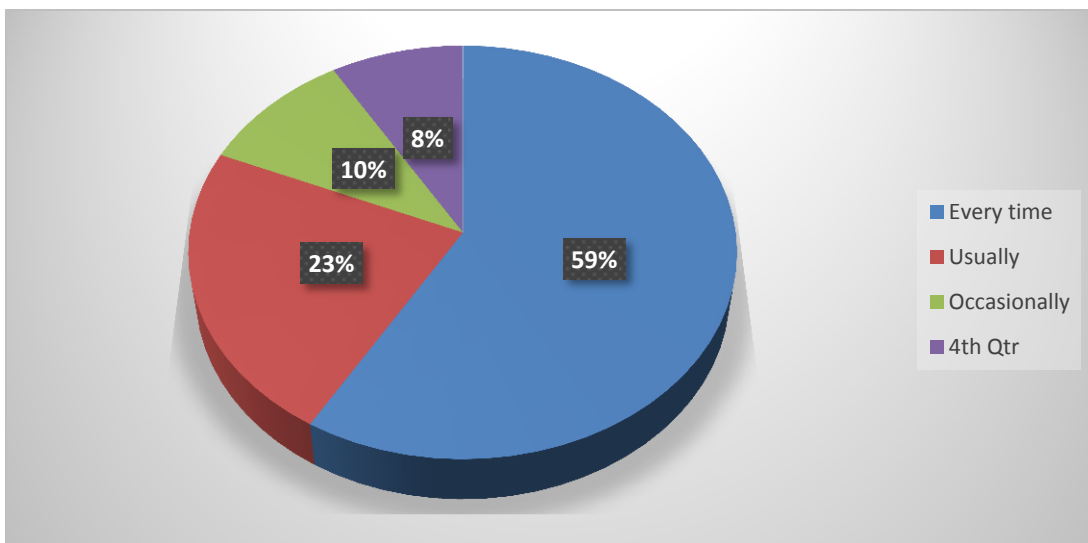
11) Your mentor does a necessary follow-up with an assigned task to you

Every time : (15.84 %)
Usually : (77.13 %)
Occasionally /Sometime : (5.28 %)
Rarely : (1.47 %)
I dont have a mentor : (0 %)



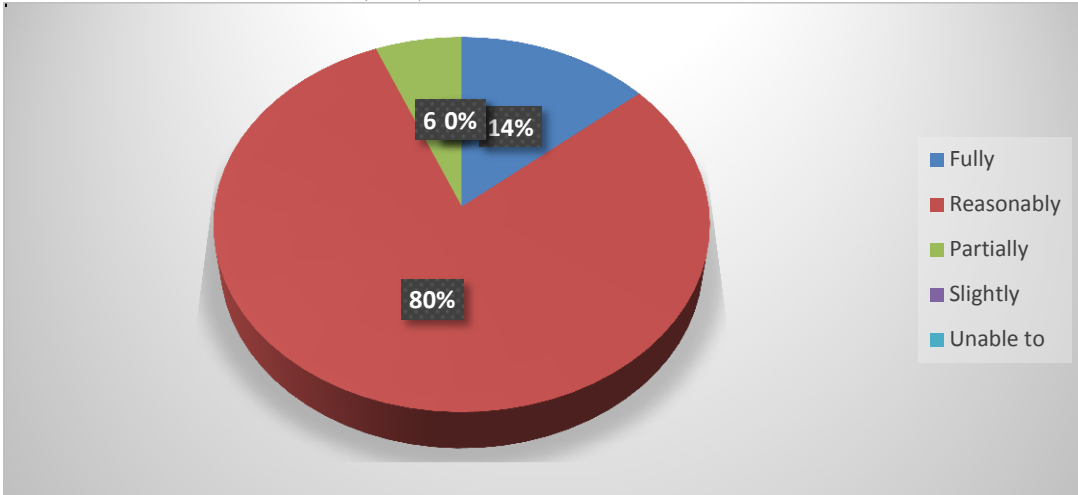
12) The teachers illustrate the concepts through examples and applications

Every time : (20.53 %)
Usually : (73.02%)
Occasionally /Sometime : (5.57 %)
Rarely : (0 %)
Never : (0 %)



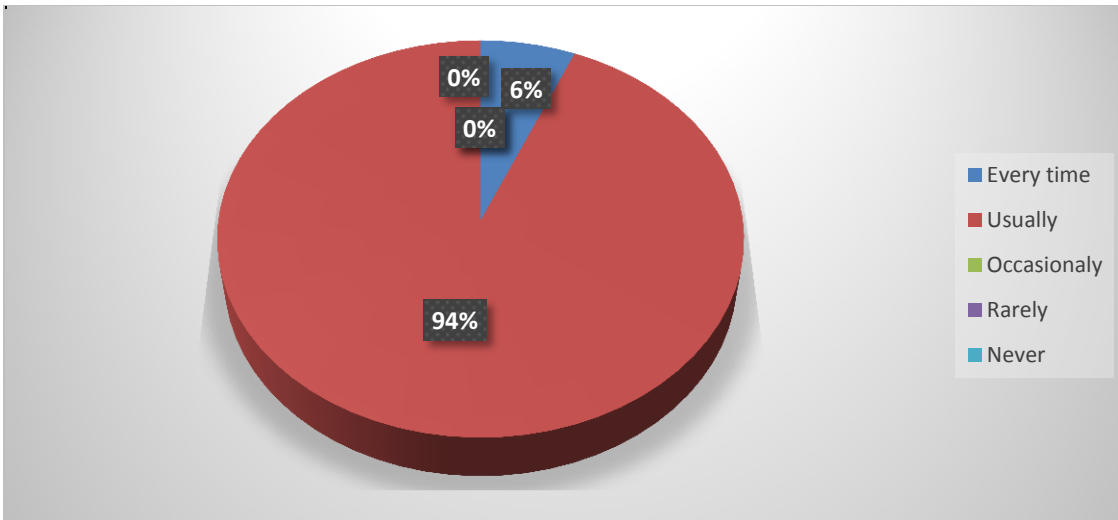
13) The teachers identify your strengths and encourage you with providing right level of challenges

Fully : (13.78%)
Reasonably : (79.18 %)
Partially : (6.16%)
Slightly : (0%)
Unable to : (0 %)



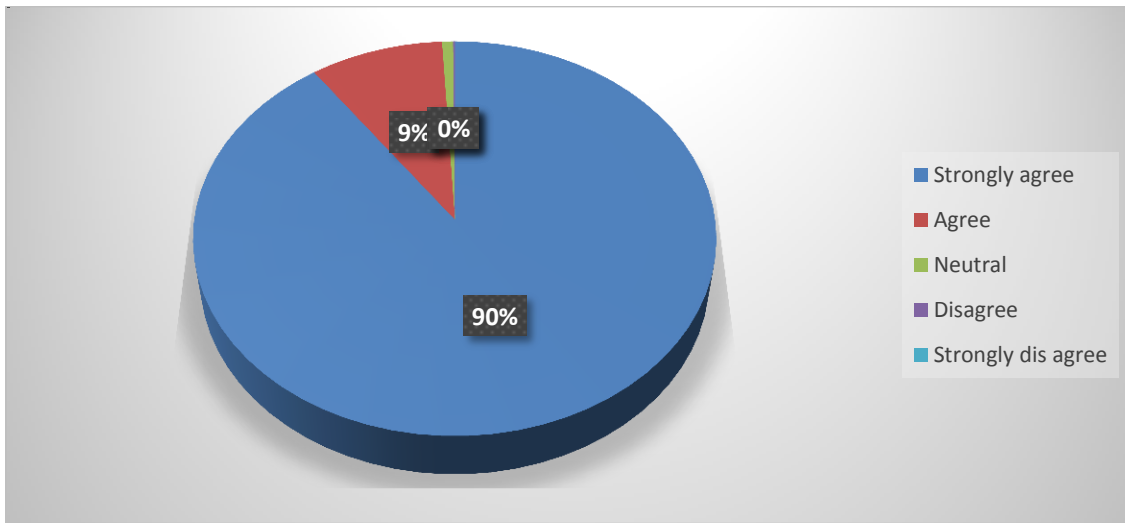
14) Teachers are able to identify your weaknesses and help you to overcome them

Every time : (5.57 %)
Usually : (81.82%)
Occasionally /Sometime : (0%)
Rarely : (0 %)
Never : (0%)



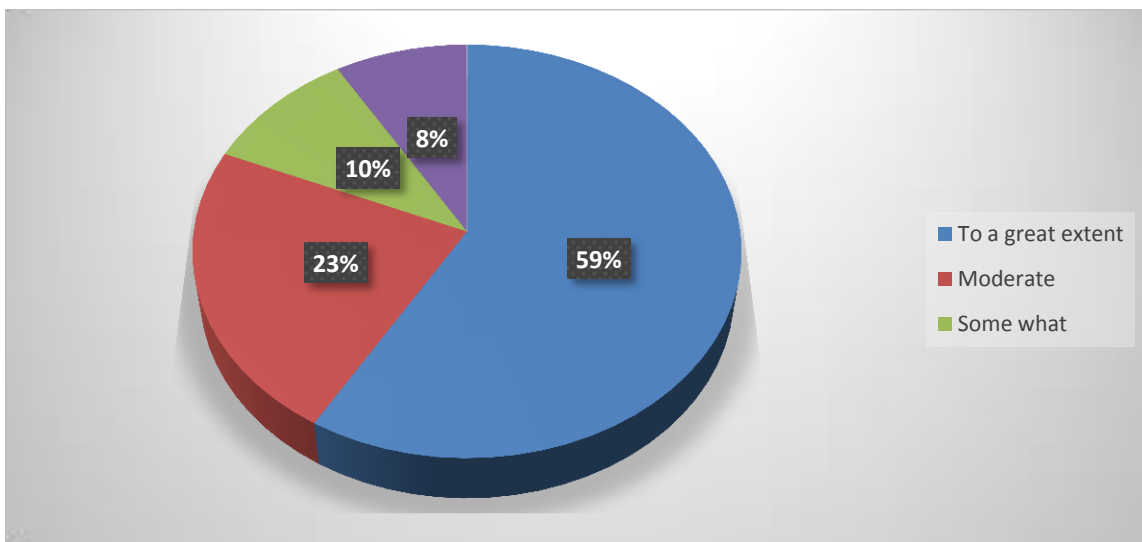
15) The institution makes effort to engage students in the monitoring, review and continuous quality improvement of the teaching learning process

Strongly agree	: (0 %)
Agree	: (82.11 %)
Neutral	: (6.74%)
Disagree	: (1.17%)
Strongly Disagree	: (0 %)



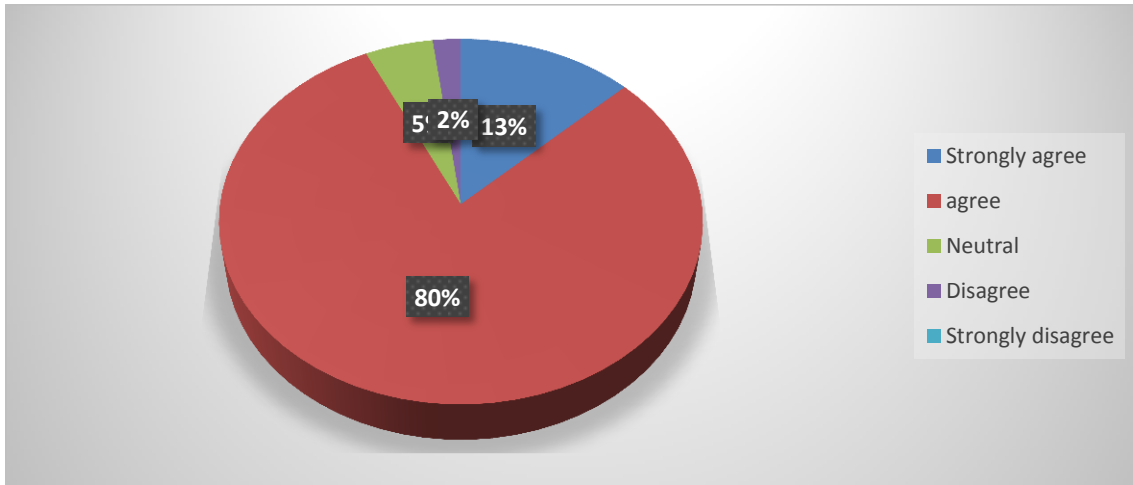
16) The institute/ teachers use student centric methods, such as experiential learning, participative learning and problem solving methodologies for enhancing learning experiences

To a great extent	: (14.96%)
Moderate	: (79.47 %)
Some what	: (4.99%)
Very little	: (0%)
Not at all	: (0 %)



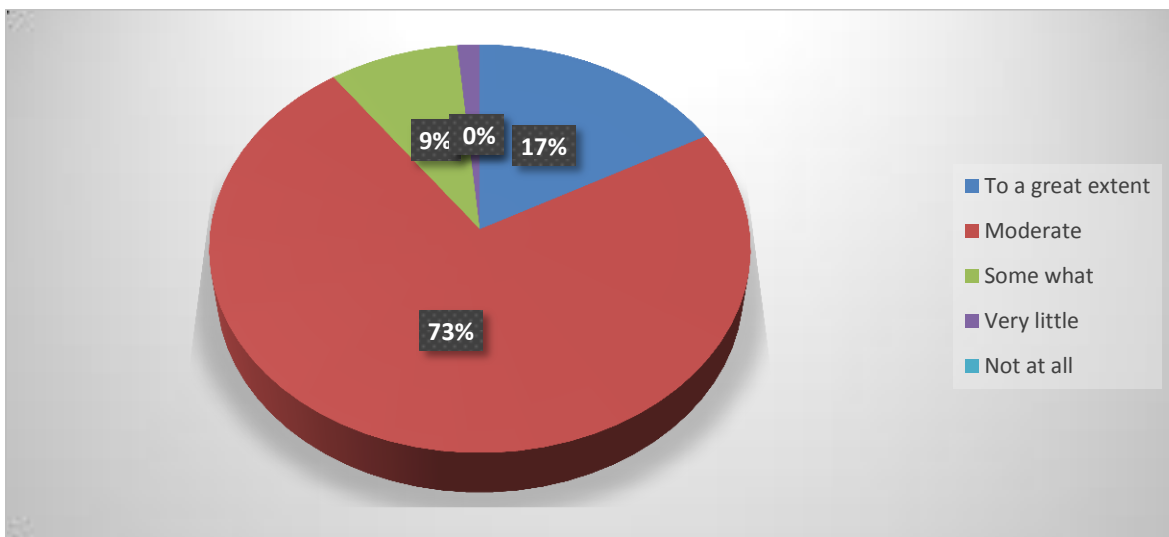
17) Teachers encourage you to participate in extracurricular activities

Strongly agree : (12.9%)
Agree : (80.06%)
Neutral : (4.99 %)
Disagree : (2.05%)
Strongly Disagree : (0 %)



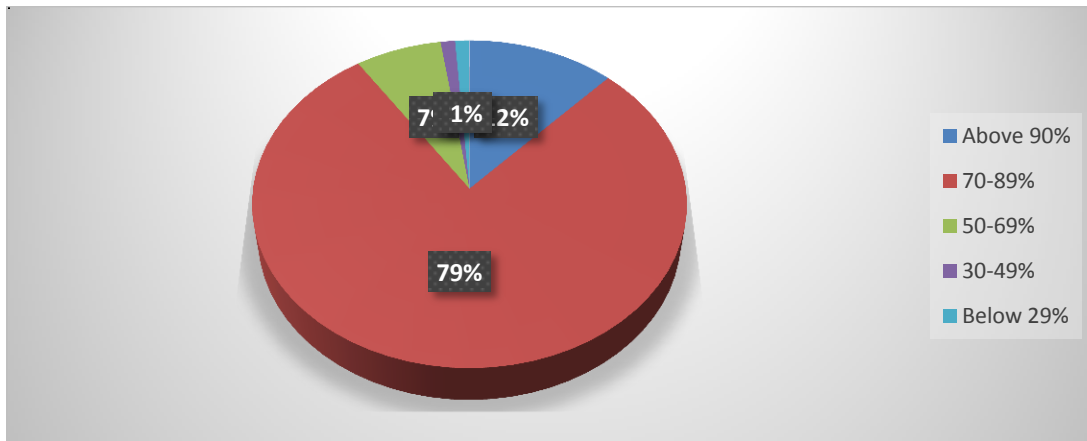
18) Efforts are made by the institute/ teachers to inculcate soft skills, life skills and employability skills to make you ready for the world of work

To a great extent : (17.01 %)
Moderate : (73.02 %)
Some what : (8.5 %)
Very little : (1.47%)
Not at all : (0 %)



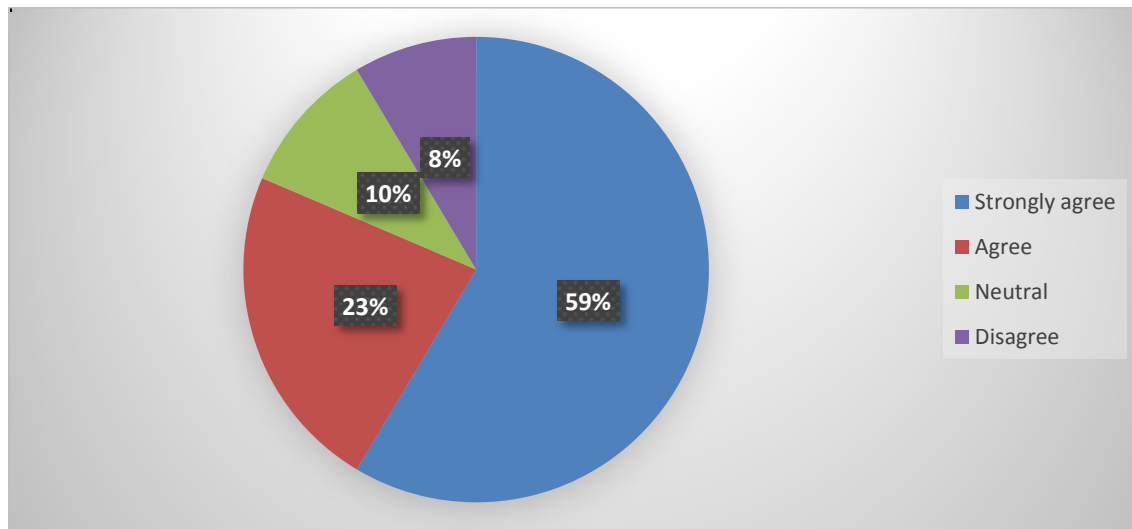
19) What percentage of teachers use ICT tools such as LCD projector, Multimedia, etc. while teaching

Above 90%	: (12.02 %)
70-89%	: (78.59%)
50-69%	: (7.04 %)
30-49%	: (1.17 %)
Below 29%	: (1.17 %)



20) The overall quality of teaching-learning process in your institute is very good

Strongly agree	: (11.73%)
Agree	: (79.77%)
Neutral	: (7.92 %)
Disagree	: (0%)
Strongly Disagree	: (0 %)



Key findings from the survey

Students Satisfactory Survey were conducted through online portal of the college. Students filled this information through their login credential provided during admission process. Hence this data is fairly collected.

1. Usually, 70.97% students say that the internal evaluation process by the teachers was fairly done.
2. The teaching and mentoring process in the institution facilitated for the students in cognitive, social and emotional growth was very well said by 75.37%.
3. 81.23% students are agreed with that the institution provides multiple opportunities to learn and grow.
4. 81.82% students usually said that teachers are identify their weakness and helps them to overcome it.
5. The overall quality of teaching-learning process in our institute is very good. Aggreded by 82.11% students.

Total number of students participated in the survey in the academic year 2020-21 is 325