

STUDENT SATISFACTION SURVEY REPORT 2019-20

Analysis and the findings:

The responses collected from students through college portal. The responses were analyzed by a team of teachers. The question-wise outcome of the results is presented below:

1 How much of the syllabus was covered in the class?

85 to 100%	: (25 %)
70 to 84%	: (50%)
55 to 69%	: (18.75 %)
30 to 54%	: (6.25 %)
Below 30%	: (0 %)

2) How well did the teachers prepare for the classes?

Thoroughly	: (0 %)
Satisfactorily	: (93.75 %)
Poorly	: (0 %)
Indifferently	: (0 %)
Would not teach at all	: (6.25 %)

3) How well were the teachers able to communicate?

Always effective	: (81.25 %)
Sometimes effective	: (6.25%)
Just satisfactorily	: (12.5 %)
Generally ineffective	: (0 %)

4) The teachers approach to teaching can best be described as

Excellent	: (18.75 %)
Very Good	: (68.75 %)
Good	: (12.5 %)
Fair	: (0 %)
Poor	: (0 %)

5) Fairness of the internal evaluation process by the teachers

Always fair	: (25 %)
Usually fair	: (68.75 %)
Sometime unfair	: (0 %)
Usually unfair	: (6.25 %)
Unfair	: (0 %)

6) Was your performance in assignments discussed with you?

Every Time	: (25 %)
Usually	: (68.75 %)
Occasionally/ Sometime	: (6.25 %)
Rarely	: (0 %)
Never	: (0 %)

7) The institute takes active interest in promoting internship, student exchange, field visit opportunities for students.

Regularly	: (81.25 %)
Often	: (6.25 %)
Sometime	: (12.5 %)

8) The teaching and mentoring process in your institution facilitates you in cognitive, social and emotional growth

Significantly : (18.75 %)
Very Well : (68.75 %)
Moderately : (6.25 %)
Marginally : (0%)
Not at all : (6.25%)

9) The institution provides multiple opportunities to learn and grow.

Strongly agree : (25 %)
Agree : (68.75%)
Neutral : (6.25%)
Disagree : (0%)
Strongly Disagree : (0 %)

10) Teachers inform you about your expected competencies, course outcomes and programme outcomes.

Every time : (50 %)
Usually : (37.5%)
Occasionally /Sometime : (12.5 %)
Rarely : (0 %)
Never : (0 %)

11) Your mentor does a necessary follow-up with an assigned task to you

Every time : (43.75 %)
Usually : (50 %)
Occasionally /Sometime : (6.25 %)
Rarely : (0 %)
I dont have a mentor : (0 %)

12) The teachers illustrate the concepts through examples and applications

Every time : (50 %)
Usually : (43.75%)
Occasionally /Sometime : (6.25 %)
Rarely : (0 %)
Never : (0 %)

13) The teachers identify your strengths and encourage you with providing right level of challenges

Fully : (18.75%)
Reasonably : (62.5 %)
Partially : (12.5%)
Slightly : (6.25%)
Unable to : (0 %)

14) Teachers are able to identify your weaknesses and help you to overcome them

Every time : (6.25 %)
Usually : (75 %)
Occasionally /Sometime : (0%)
Rarely : (0 %)
Never : (12.5 %)

15) The institution makes effort to engage students in the monitoring, review and continuous quality improvement of the teaching learning process

Strongly agree : (0 %)
Agree : (81.25 %)
Neutral : (0 %)
Disagree : (0%)
Strongly Disagree : (0 %)

16) The institute/ teachers use student centric methods, such as experiential learning, participative learning and problem solving methodologies for enhancing learning experiences

To a great extent : (31.25%)
Moderate : (68.75 %)
Some what : (0%)
Very little : (0%)
Not at all : (0 %)

17) Teachers encourage you to participate in extracurricular activities

Strongly agree : (31.25%)
Agree : (68.75%)
Neutral : (0 %)
Disagree : (0%)
Strongly Disagree : (0 %)

18) Efforts are made by the institute/ teachers to inculcate soft skills, life skills and employability skills to make you ready for the world of work

To a great extent : (25 %)
Moderate : (68.75 %)
Some what : (6.25 %)
Very little : (0%)
Not at all : (0 %)

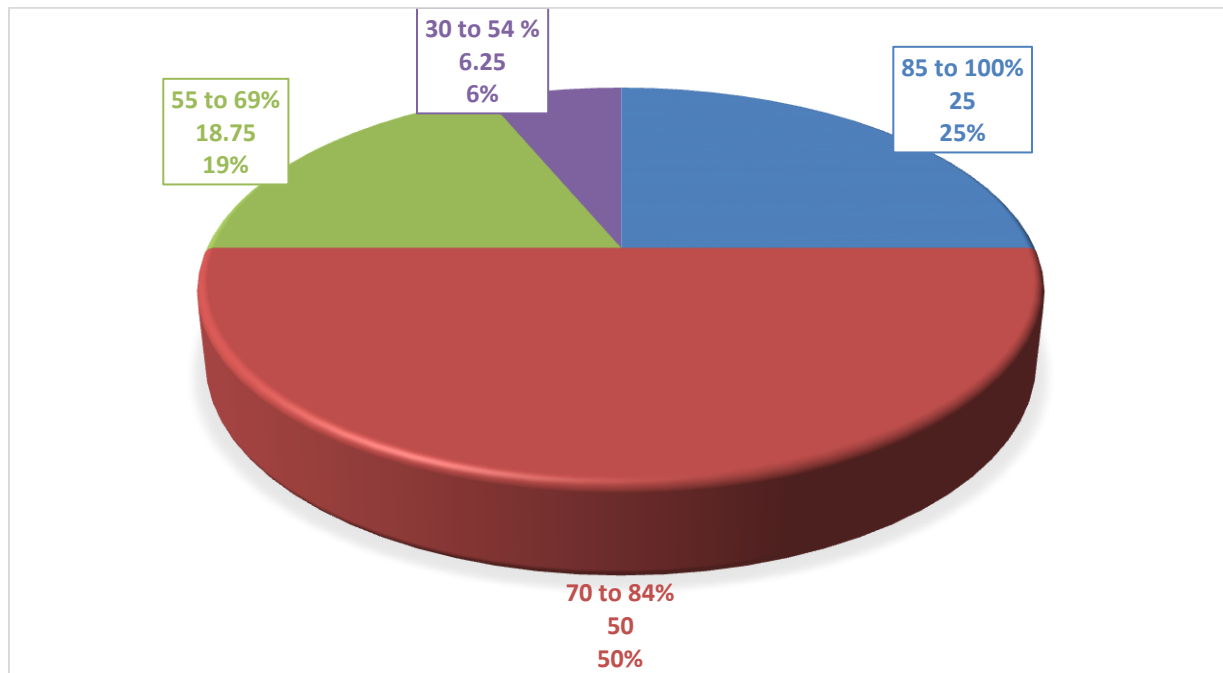
19) What percentage of teachers use ICT tools such as LCD projector, Multimedia, etc. while teaching

Above 90% : (6.25 %)
70-89% : (81.25%)
50-69% : (12 %)
30-49% : (0 %)
Below 29% : (0 %)

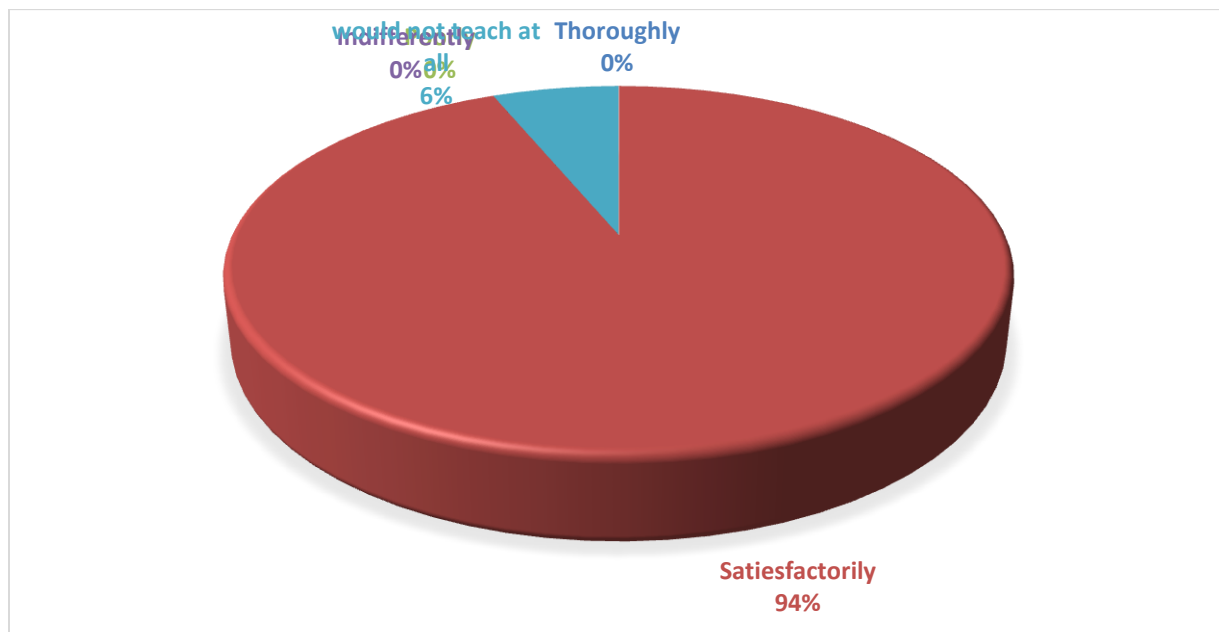
20) The overall quality of teaching-learning process in your institute is very good

Strongly agree : (12.5%)
Agree : (87.5%)
Neutral : (0 %)
Disagree : (0%)
Strongly Disagree : (0 %)

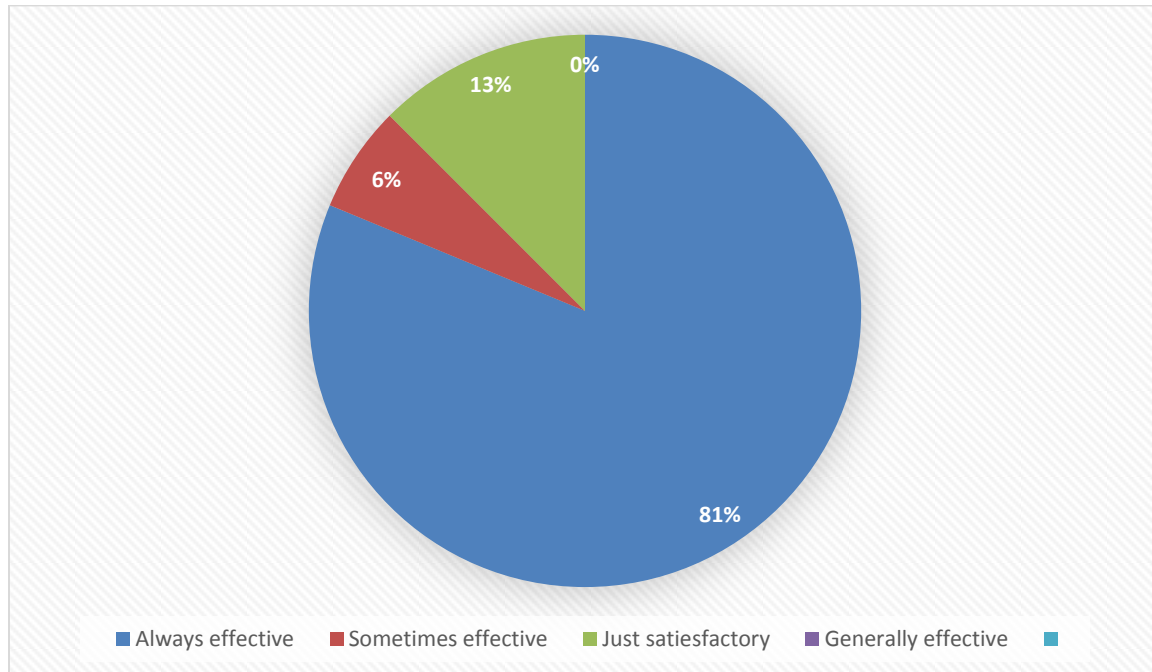
1 How much of the syllabus was covered in the class?



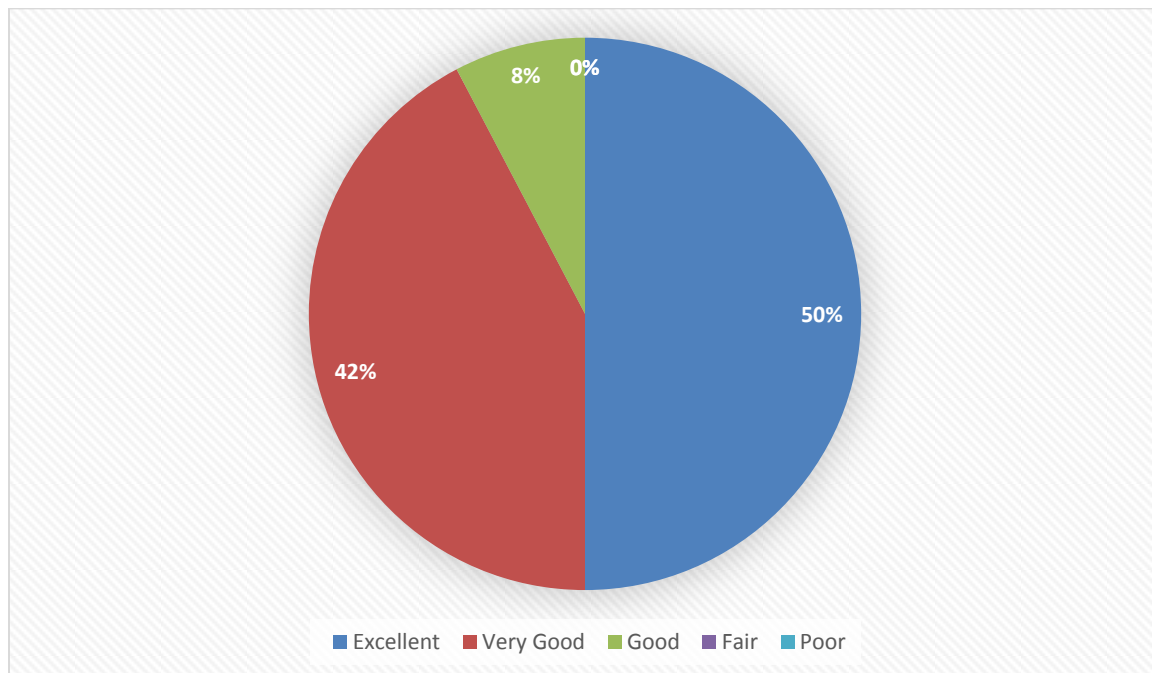
2) How well did the teachers prepare for the classes?



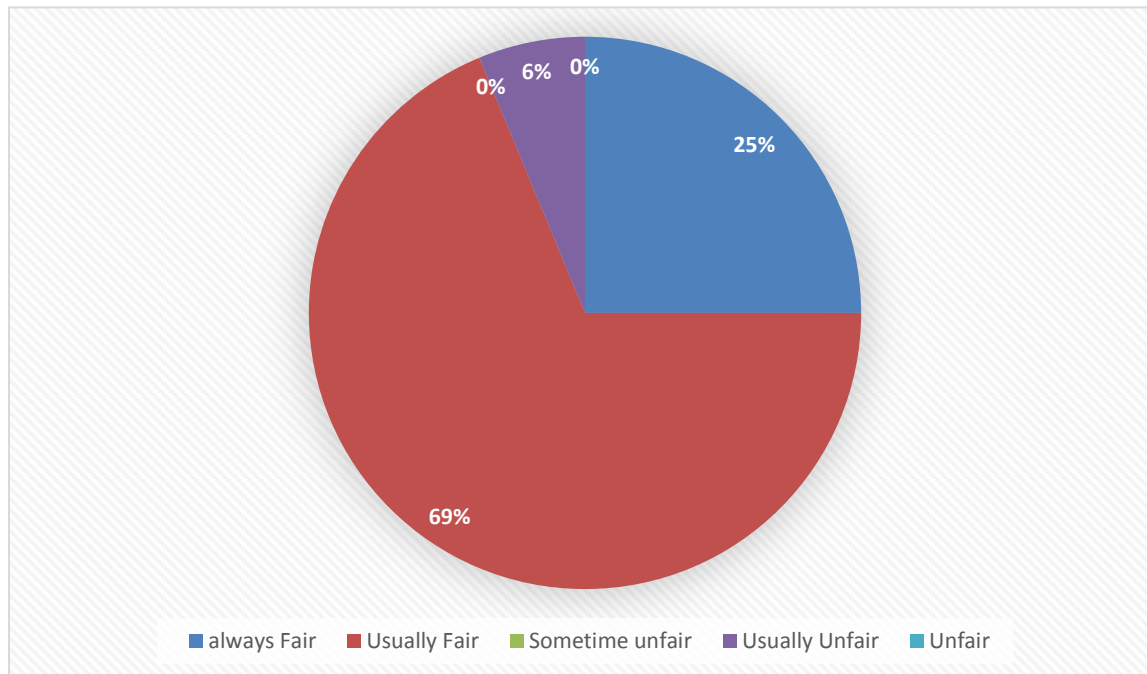
3) How well were the teachers able to communicate?



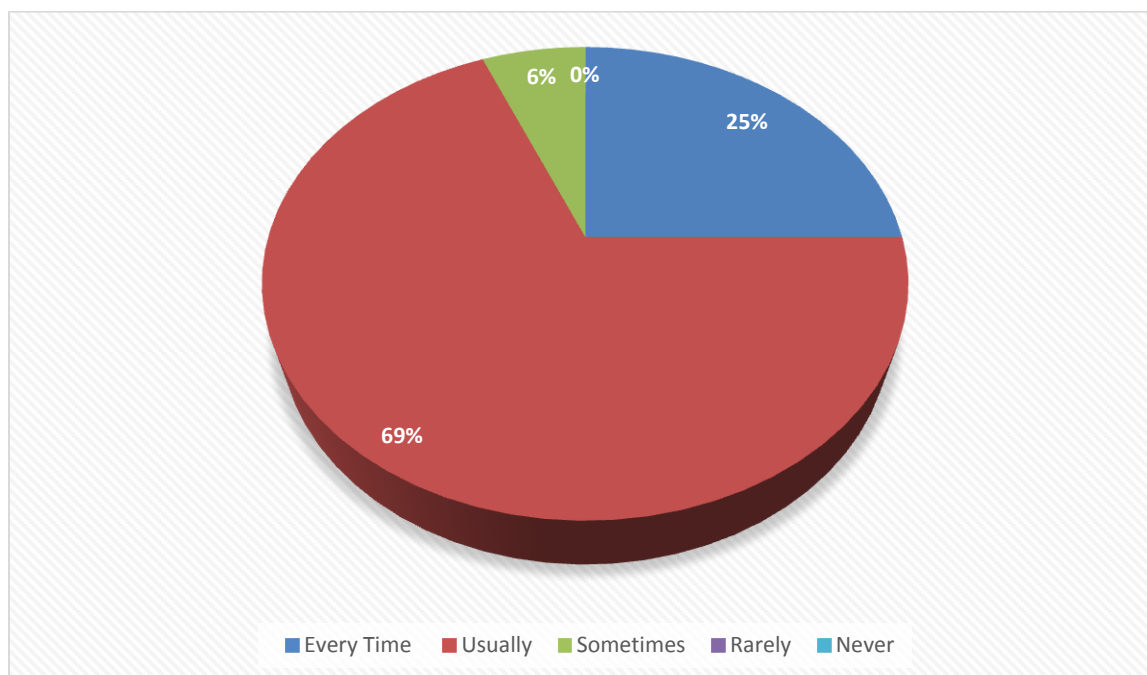
4) The teachers approach to teaching can best be described as



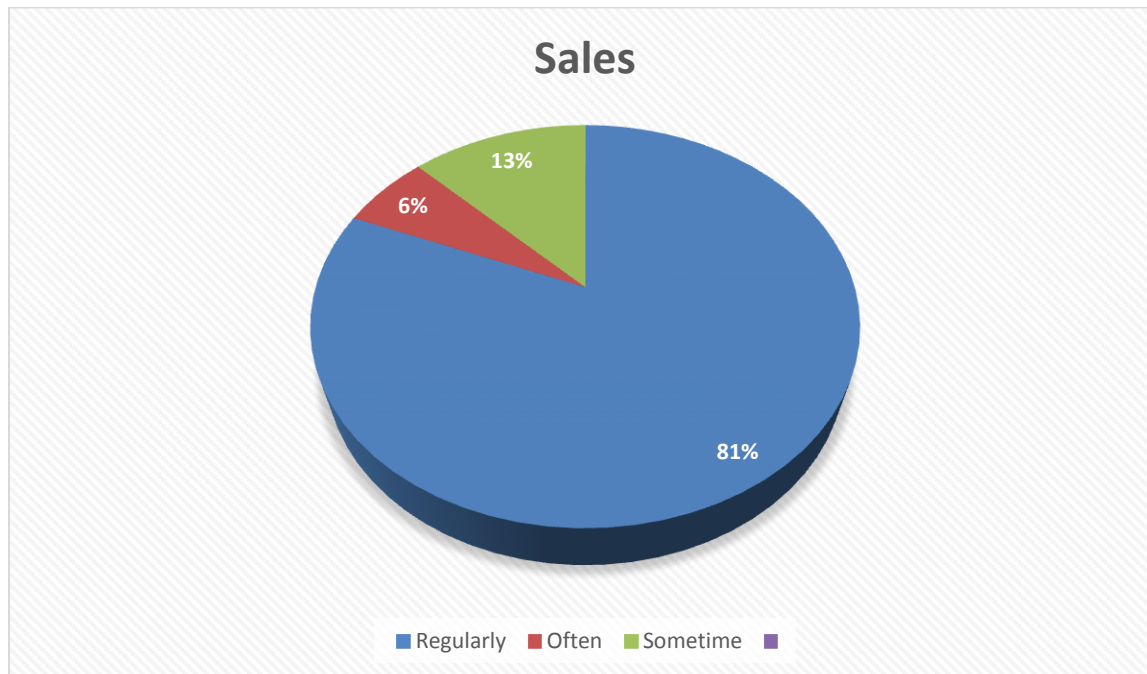
5) Fairness of the internal evaluation process by the teachers



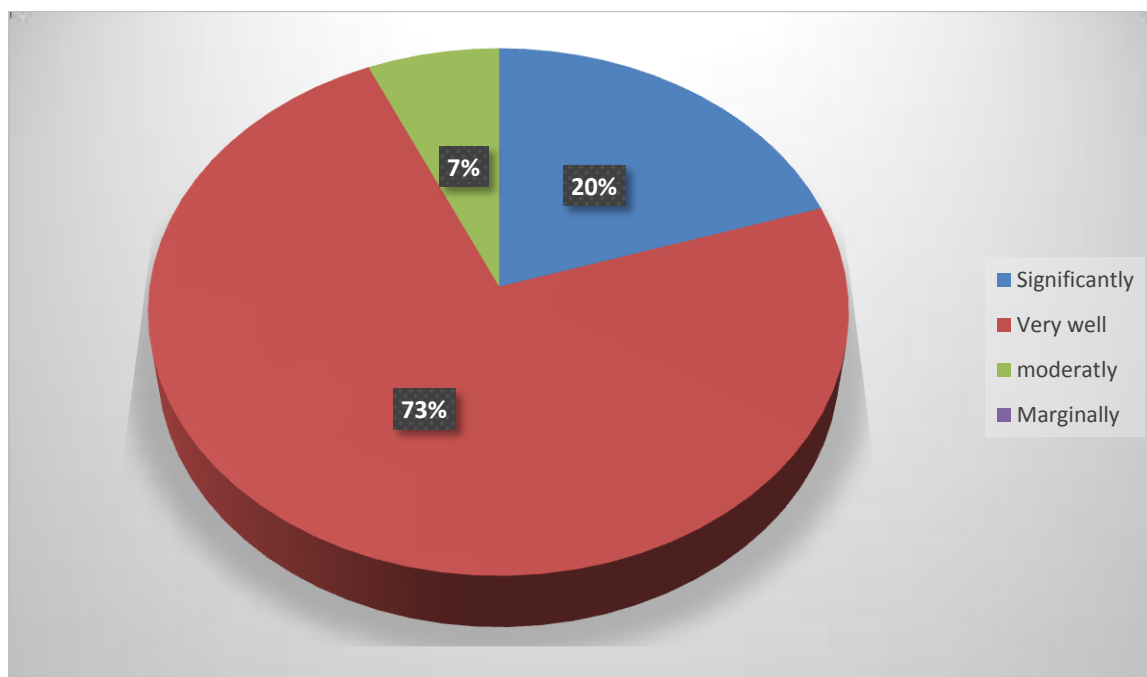
6) Was your performance in assignments discussed with you?



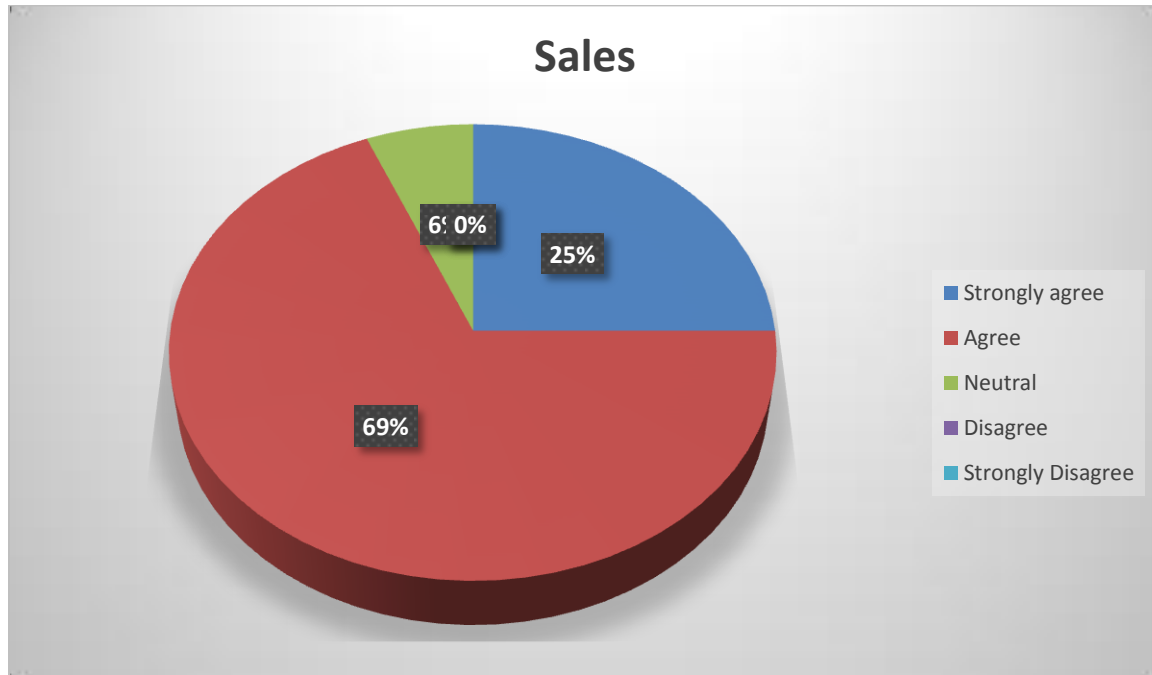
7) The institute takes active interest in promoting internship, student exchange, field visit opportunities for students.



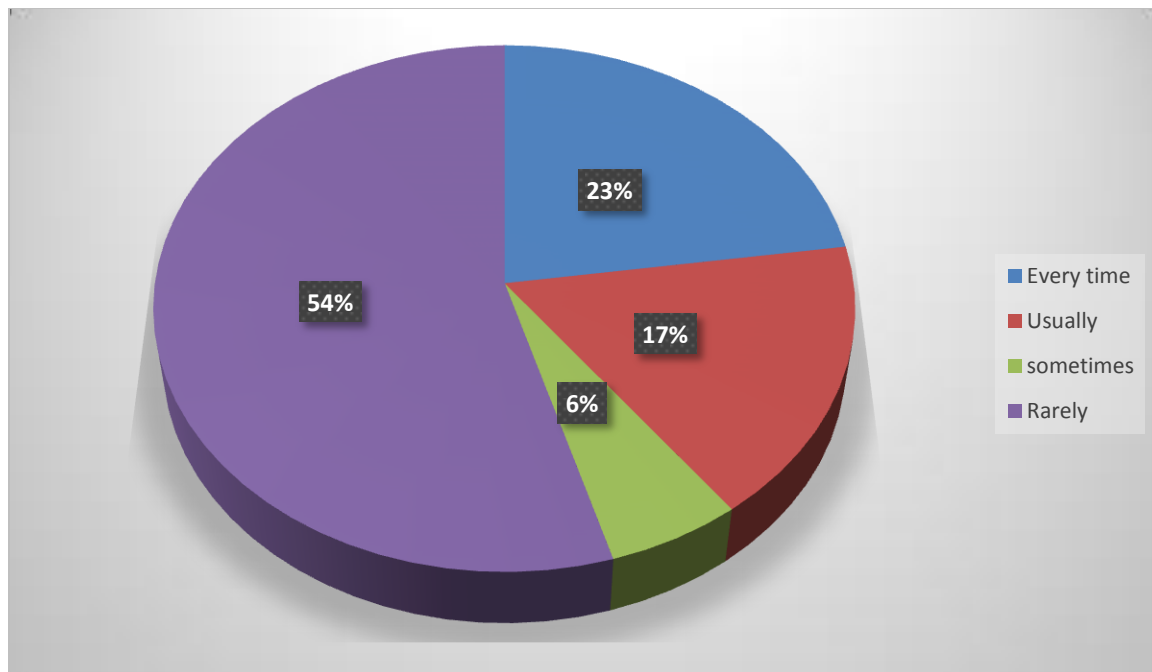
8) The teaching and mentoring process in your institution facilitates you in cognitive, social and emotional growth.



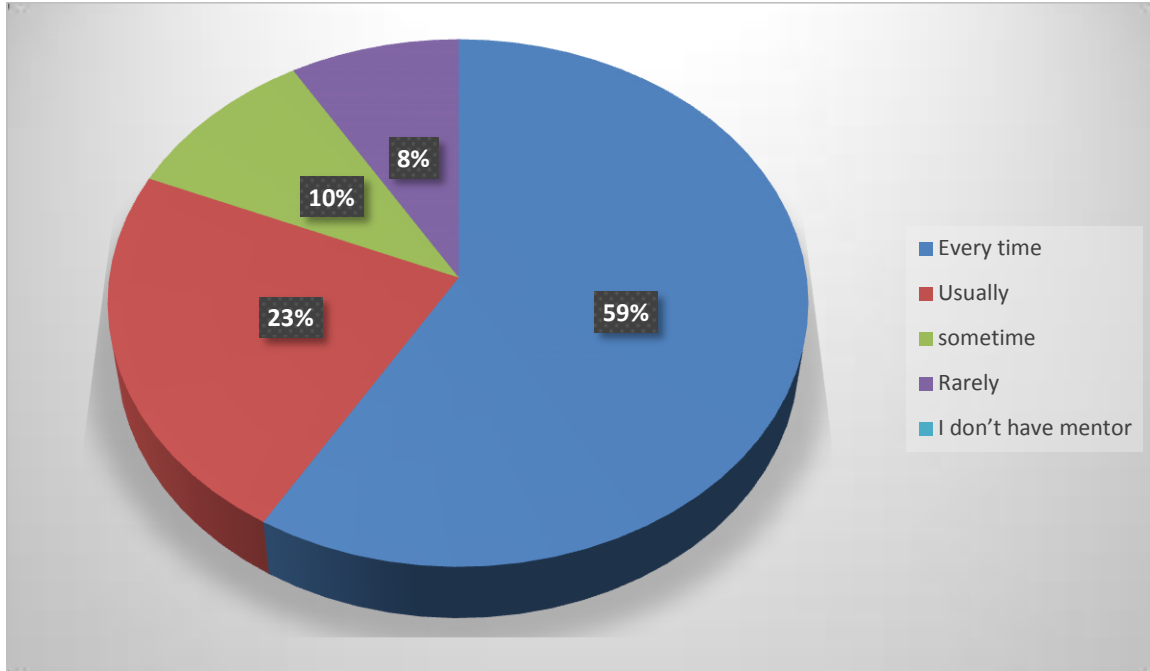
9) The institution provides multiple opportunities to learn and grow.



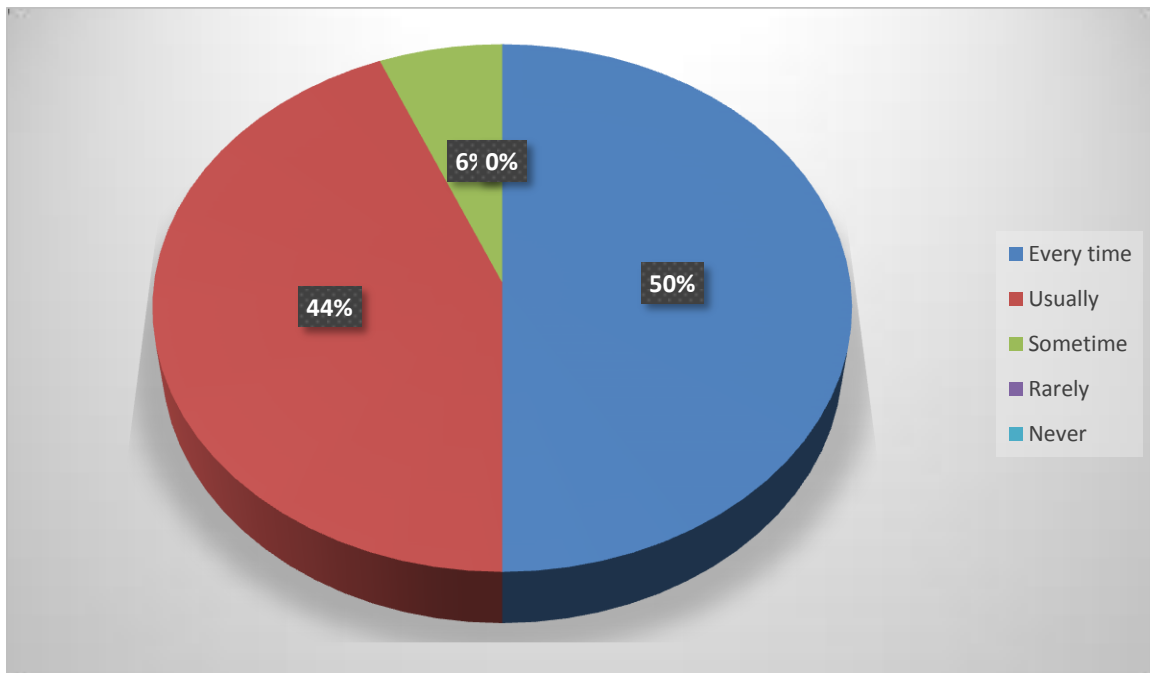
10) Teachers inform you about your expected competencies, course outcomes and programme outcomes.



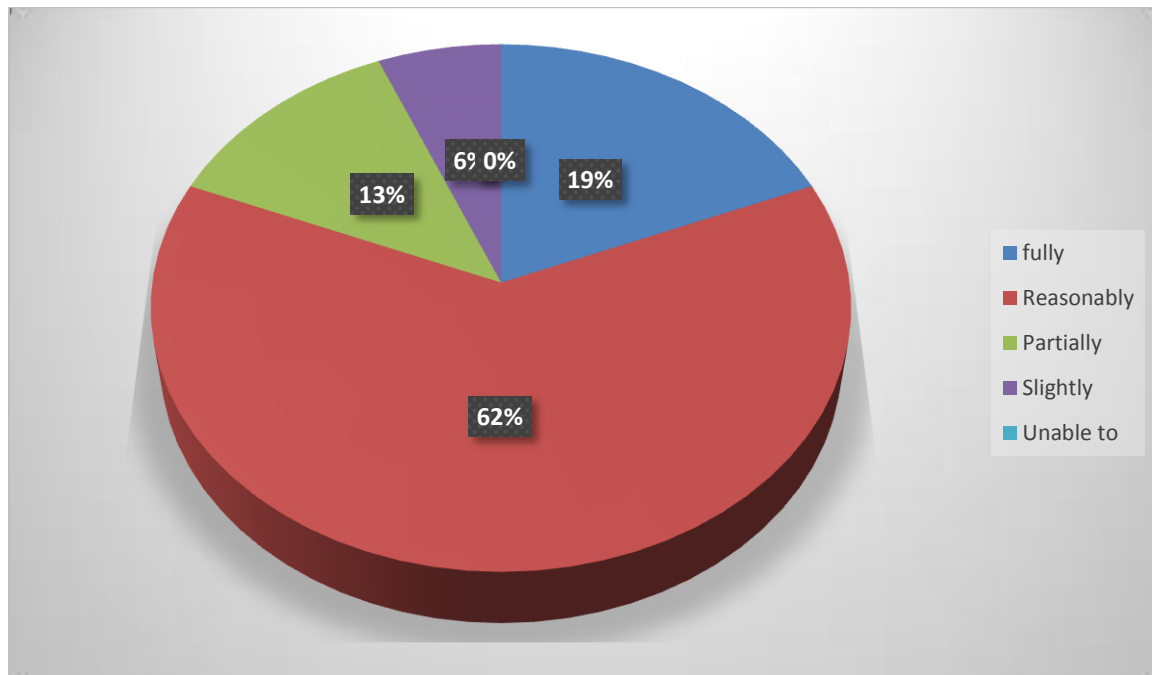
11) Your mentor does a necessary follow-up with an assigned task to you



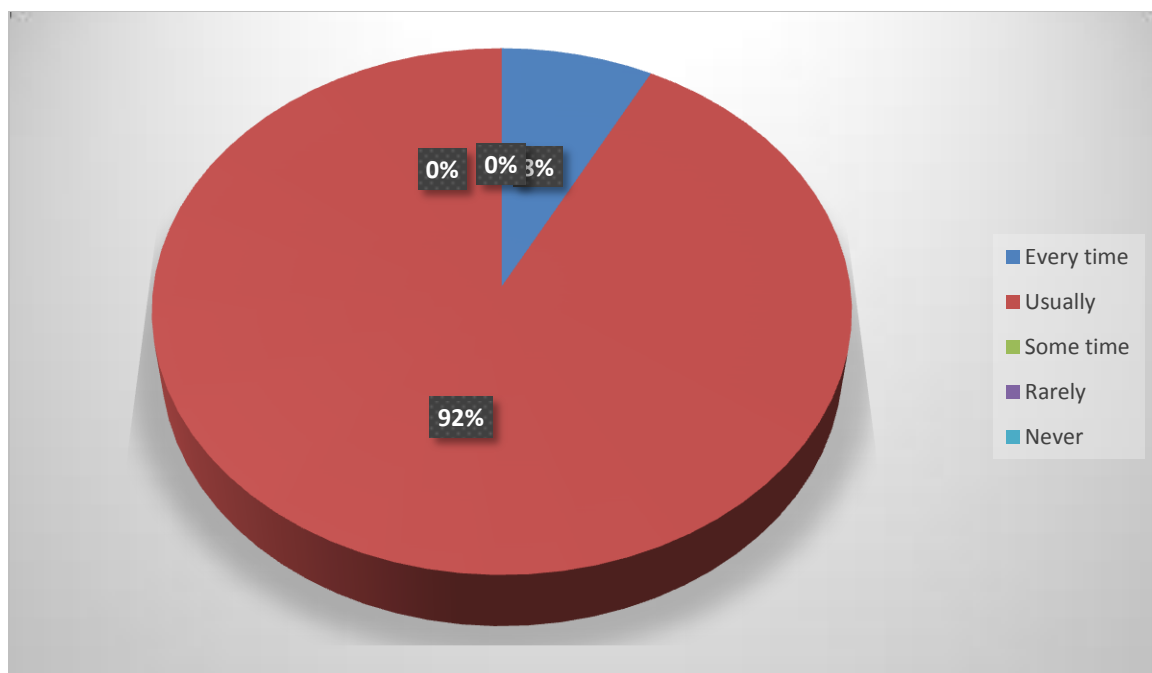
12) The teachers illustrate the concepts through examples and applications



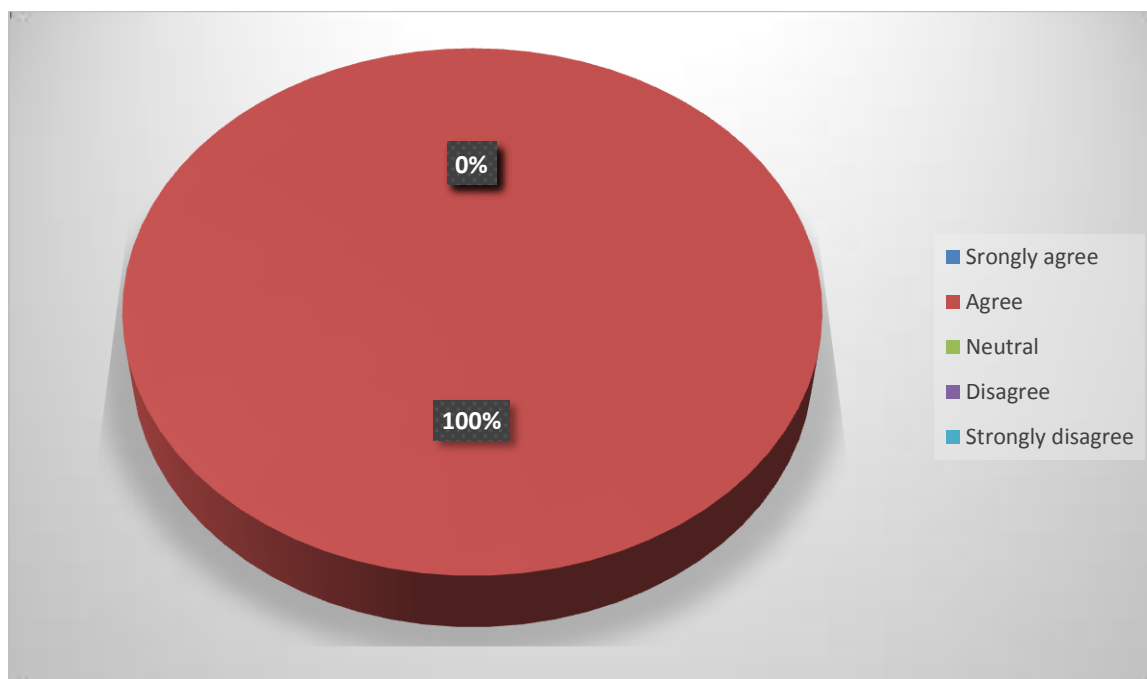
13) The teachers identify your strengths and encourage you with providing right level of challenges



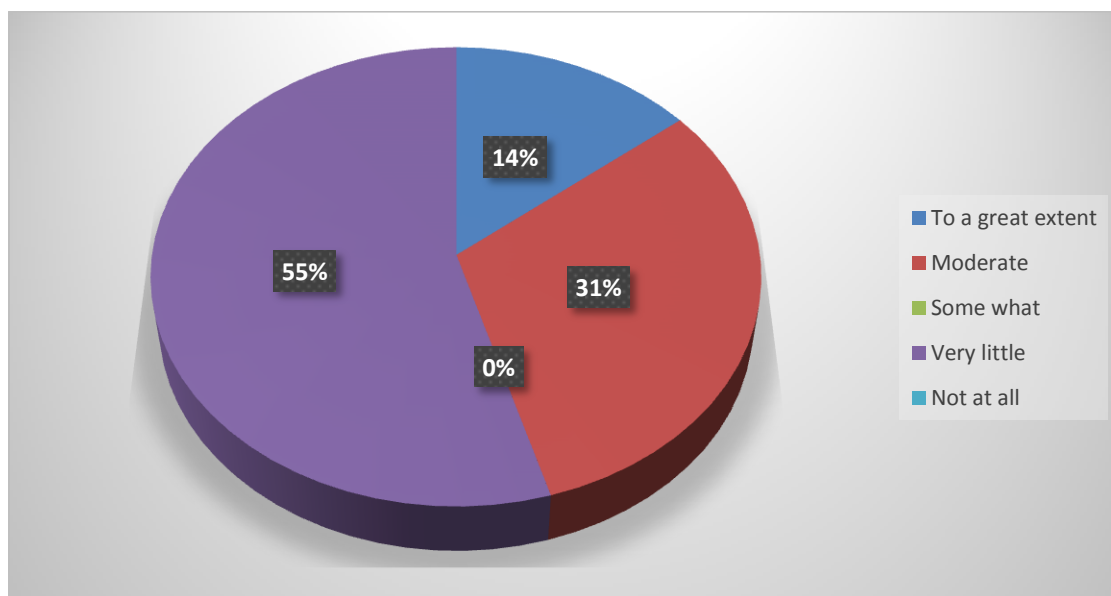
14) Teachers are able to identify your weaknesses and help you to overcome them



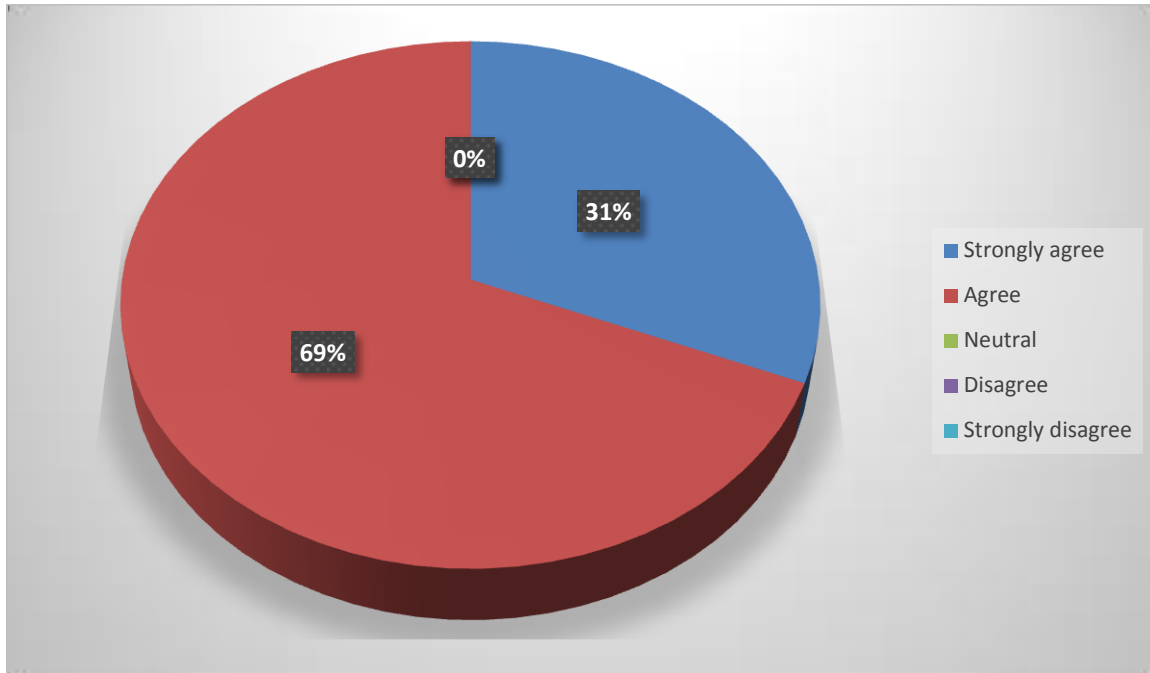
- 15) The institution makes effort to engage students in the monitoring, review and continuous quality improvement of the teaching learning process



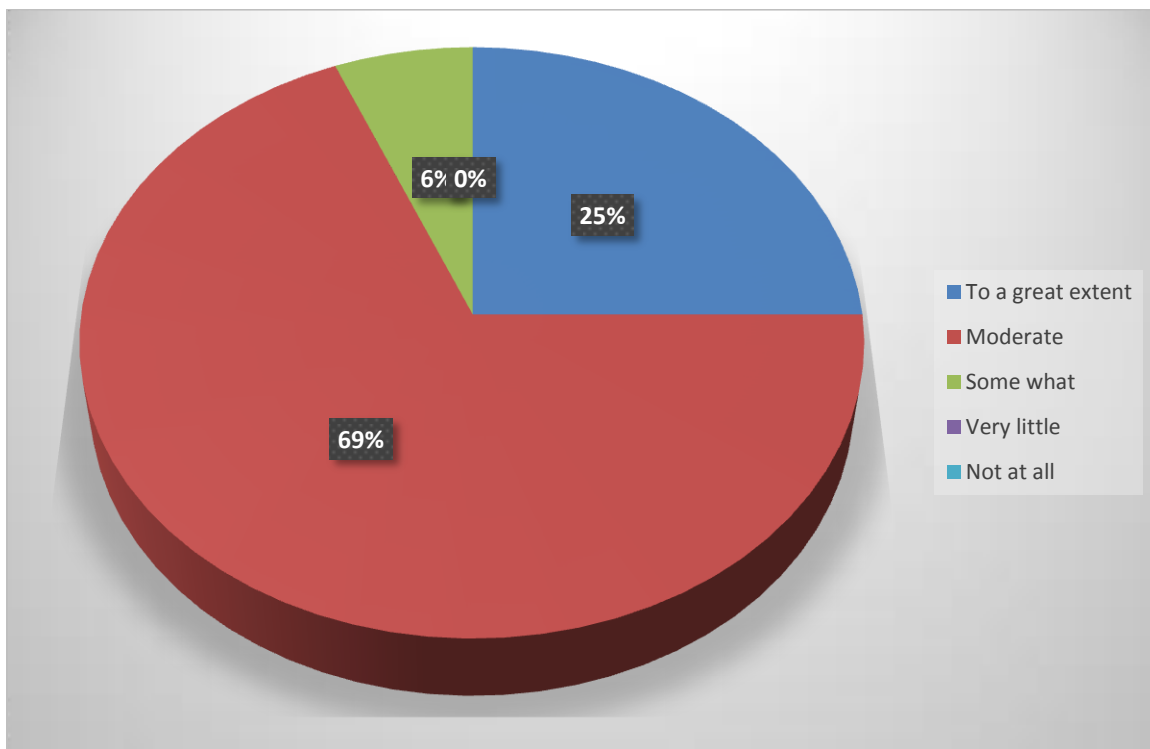
- 16) The institute/ teachers use student centric methods, such as experiential learning, participative learning and problem solving methodologies for enhancing learning experiences.



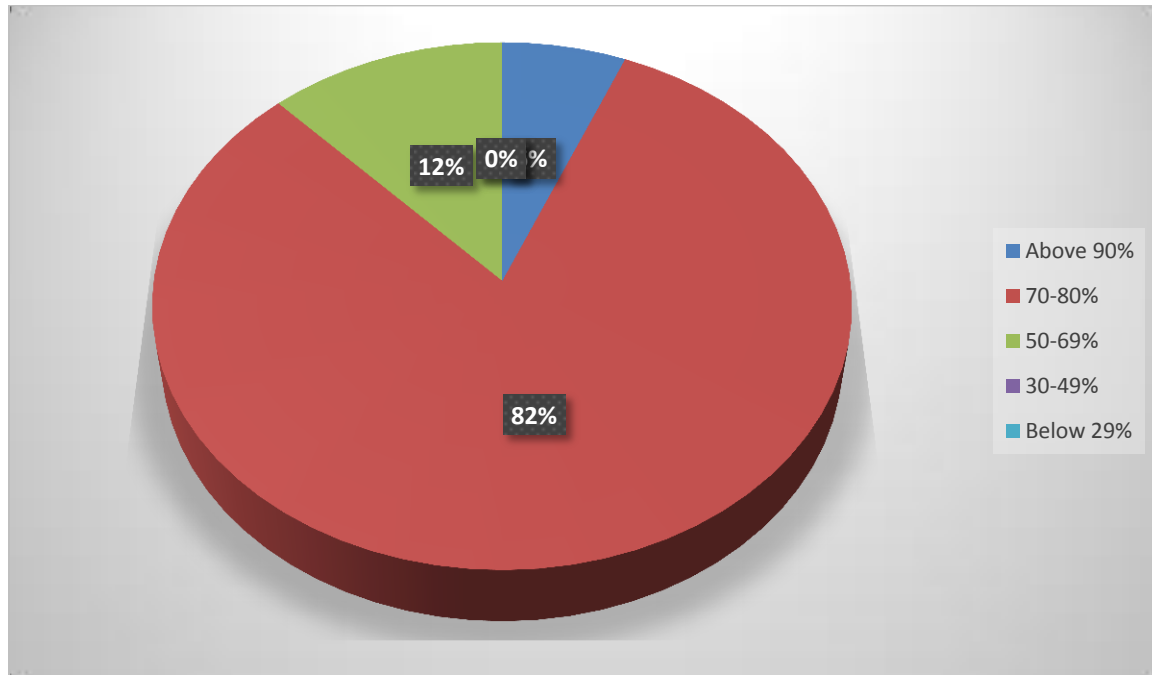
17) Teachers encourage you to participate in extracurricular activities.



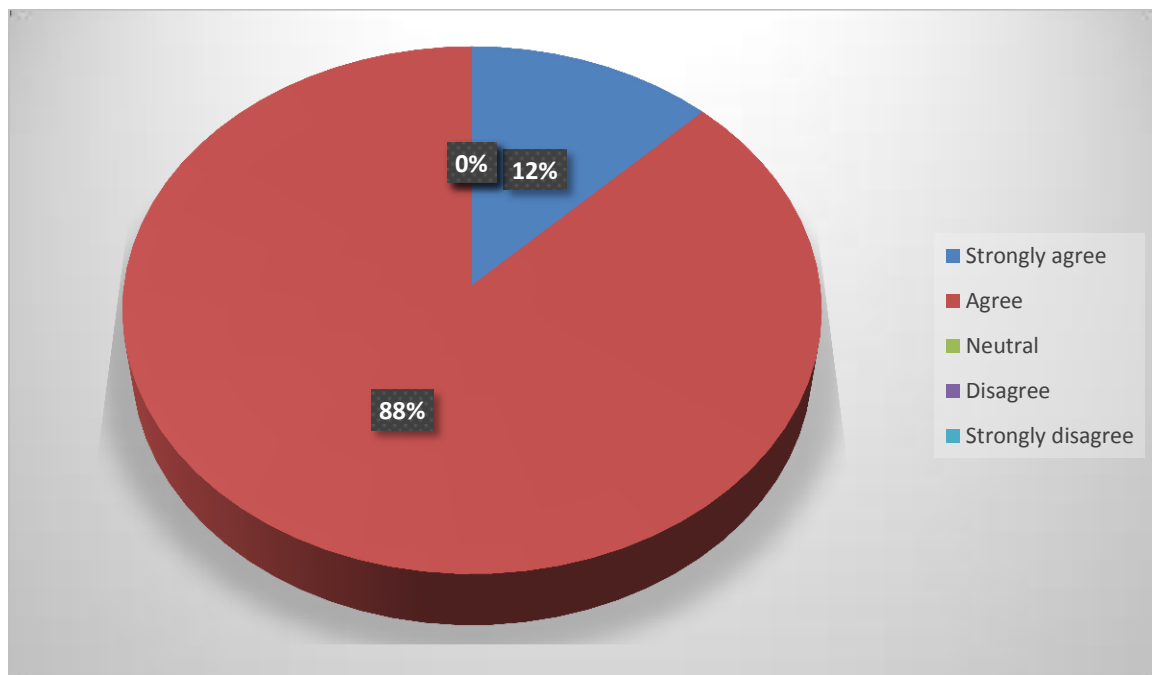
18) Efforts are made by the institute/ teachers to inculcate soft skills, life skills and employability skills to make you ready for the world of work.



19) What percentage of teachers use ICT tools such as LCD projector, Multimedia, etc. while teaching



20) The overall quality of teaching-learning processing your institute is very good.



Key findings from the survey

Students Satisfactory Survey were conducted through online portal of the college. Students filled this information through their login credential provided during admission process. Hence this data is fairly collected.

1. 81.25% students say the teachers were able to communicate always effectively.
2. 81.25% students satisfied that the institute take active interest in promoting internship, students exchange, field visit opportunities for students.
3. 75% students usually said that teachers are identify their weakness and helps them to overcome it.
4. A high percentage of students (81.25%) complete satisfaction over the quality of Teaching Learning in our college.
5. The overall quality of teaching-learning process in our institute is very good. Aggregeed by 87.5% students.

Total number of students participated in the survey in the academic year 2019-20 is 218